



# STABILITY PACT

## FOR SOUTH EASTERN EUROPE

The Present and Future of Local Democracy  
Reform and Cross Border Cooperation in the  
Balkans

Srdjan Cvijic, Expert Working Table I Stability Pact for  
South East Europe

Rimini, 16<sup>th</sup> June 2006

# The European Union



*The Instrument for  
Pre-Accession  
Assistance*



**STABILITY PACT**  
FOR SOUTH EASTERN EUROPE



# *The Instrument for Pre-Accession Assistance*

- *An integrated financial instrument to assist candidate countries (Croatia; FYROM; Turkey) and potential candidate countries (Bosnia and Herzegovina; Serbia; Montenegro and Albania)*
- *Replaces Phare, ISPA, SAPARD and Turkey pre-accession instruments, as well as the CARDS instrument*
- *Financial envelope (2007-13): 10.213 bio € (constant prices) (European Commission's original proposal ~12.9 bio €)*



**STABILITY PACT**  
FOR SOUTH EASTERN EUROPE



# *Structure of the IPA*

*Five components:*

- I. Transition Assistance and Institution Building*
- II. Cross-Border Co-operation*
- III. Regional Development*
- IV. Human Resources Development*
- V. Rural Development*



**STABILITY PACT**  
FOR SOUTH EASTERN EUROPE

# *Differentiation under IPA*



- *Potential candidates:*

*Support for participation in the Stabilisation and Association process all the way to future accession, with access to the first two IPA components; eligibility for components III, IV and V-type measures under component I*

- *Candidate countries:*

*5 components to help countries to:*

- ◆ *Adopt and implement the acquis*
- ◆ *Prepare for EU funds on accession*



# IPA CBC Scope

- Covers CBC at candidate/potential candidate borders with Member States
- Covers CBC at borders among candidates and potential candidates (essentially Western Balkan “internal” borders, as appropriate)
- Covers participation of candidates / potential candidates in the ERDF transnational (e.g. the successor of CADSES) and interregional programmes and in ENPI multilateral sea basins programmes, as appropriate



**STABILITY PACT**  
FOR SOUTH EASTERN EUROPE



# Broad Aims




- ⇒ Promote sustainable economic and social development in the border areas
- ⇒ Address common challenges in environment, public health, prevention of and fight against organised crime, ...
- ⇒ Ensure efficient and secure borders
- ⇒ Promote legal and administrative cooperation
- ⇒ Promote local "people to people" type actions



**STABILITY PACT**  
FOR SOUTH EASTERN EUROPE

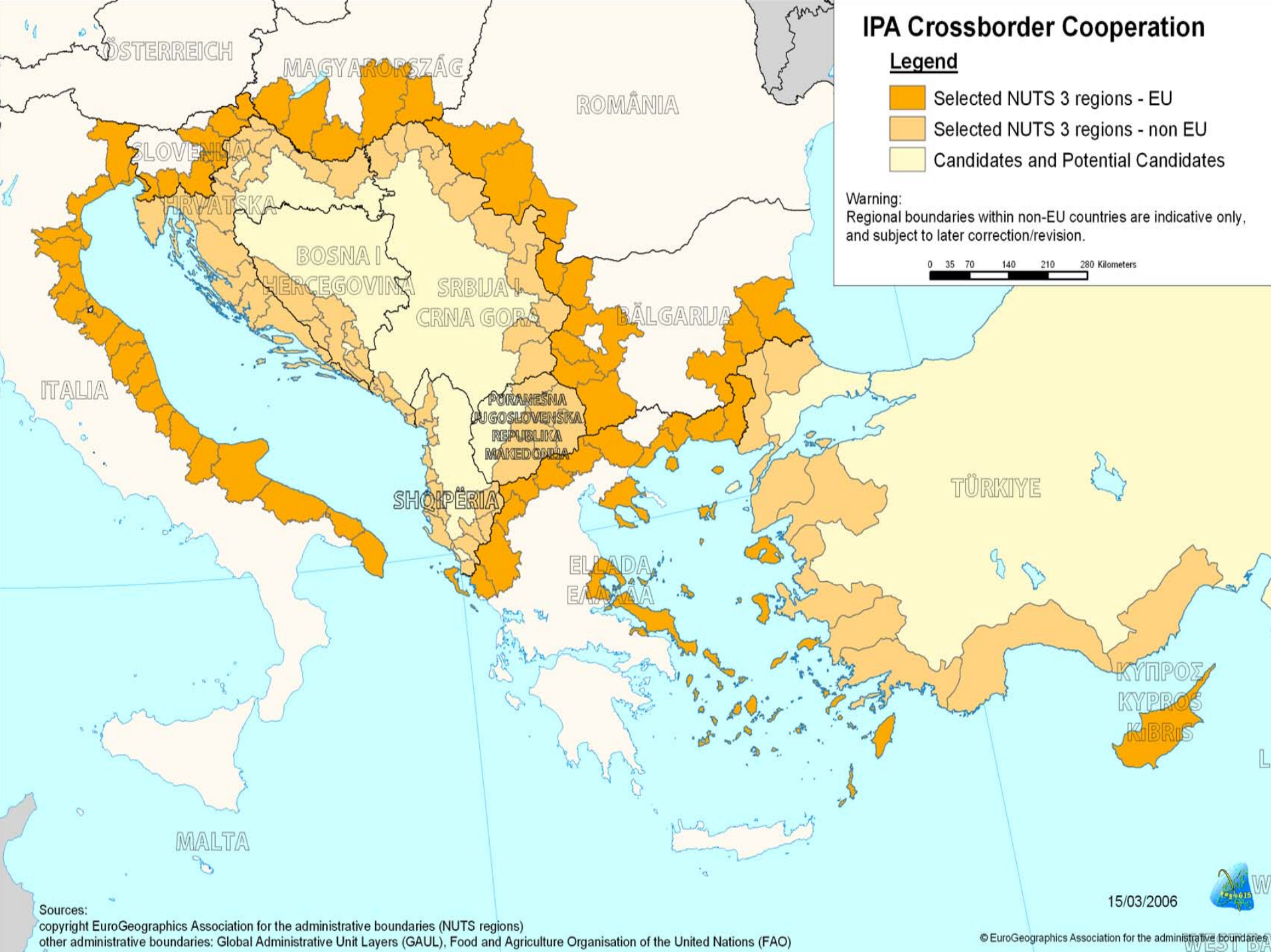
# IPA Crossborder Cooperation

## Legend

-  Selected NUTS 3 regions - EU
-  Selected NUTS 3 regions - non EU
-  Candidates and Potential Candidates

Warning:  
Regional boundaries within non-EU countries are indicative only,  
and subject to later correction/revision.

0 35 70 140 210 280 Kilometers



# *Next steps*

- *Adoption of the IPA framework Regulation (15-06-2006 European Parliament)*
- *Presentation of the IPA Implementing rules to the relevant Committees and adoption*
- *Establishment of MIFF*
- *Strategic planning (MIPD) per country, all components*
- *Specific programming per country, per component*



**STABILITY PACT**  
FOR SOUTH EASTERN EUROPE

# Building on lessons learned



- ⇒ *Single legal base: more coherence and co-ordination in assistance, as well as targeted and more efficient assistance*
- ⇒ *Single implementing regulation: harmonisation of implementing procedures to the maximum possible extent*

*Beneficiary country: get started as soon as possible to prepare the necessary structures and programming documents*



**STABILITY PACT**  
FOR SOUTH EASTERN EUROPE

# The Stability Pact for SEE

- Is SP SEE the Marshall Plan for the region of the Balkans?
- Does SP SEE finance projects in the Balkans?
- Does SP SEE implement projects in SEE?
- Does SP SEE directly participate in the EU-accession negotiations of these countries?



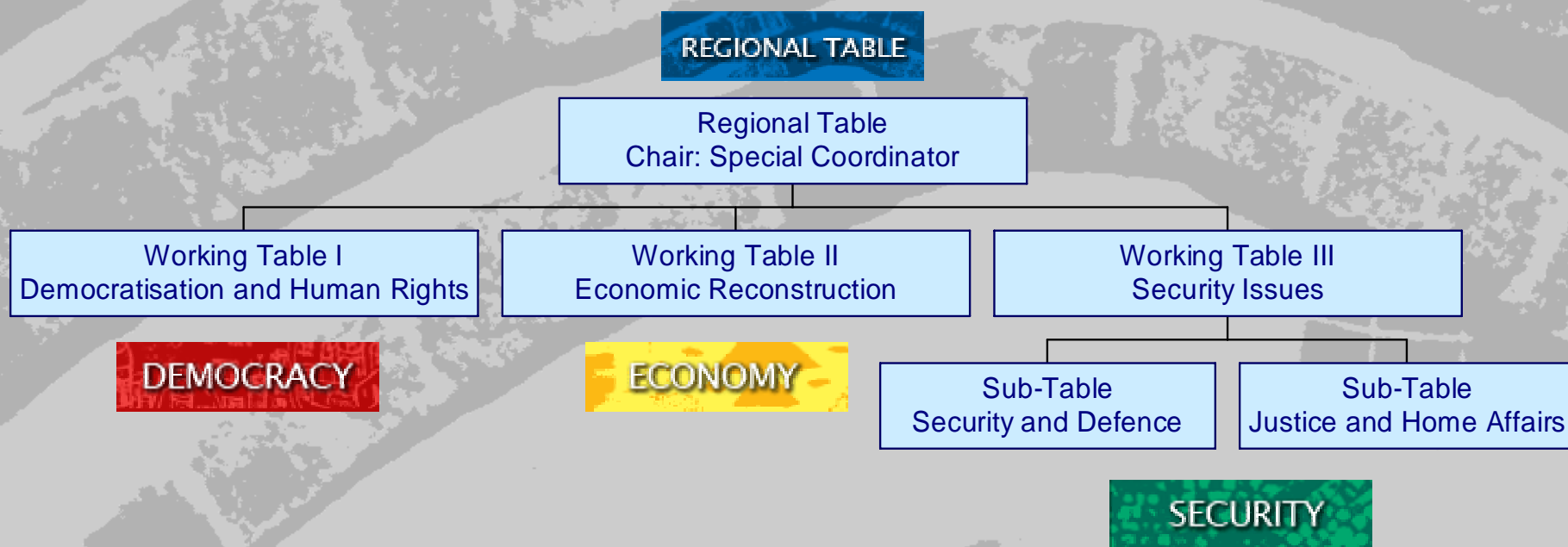
**STABILITY PACT**  
FOR SOUTH EASTERN EUROPE

**NO**



**STABILITY PACT**  
FOR SOUTH EASTERN EUROPE

# Structure of the SP



# The Stability Pact Donors' Assistance Mapping Exercise

DAME

[www.lgi.osi.hu/stability.php](http://www.lgi.osi.hu/stability.php)

- Mapping local government specific donor assistance to Stability Pact countries
- Donor assistance coordination
- Increased effectiveness and efficiency
- Basis for developing lessons learned



**STABILITY PACT**  
FOR SOUTH EASTERN EUROPE

# PRELIMINARY RESULTS 2003

- Local government specific aid is 10-15% of total assistance
- Albania and Serbia and Montenegro received 31% and 22% of total assistance
- 20 active donors with Germany, Greece taking the lead
- Over 30% of the assistance supported water supply and sanitation projects



# The Zagreb follow-up process

- SEE Ministerial Conference, 25-26 October 2004, Zagreb, Croatia
- Effective democratic governance at local and regional level
- The state of local and regional democracy in SEE
- Fiscal decentralization in SEE
- Skopje, 8-9 November 2006 (tbc.)



# SP SEE Working Table I Partners (LODE CBC)

The Citizen's Pact for South  
Eastern Europe

<http://www.citizenspact.org.yu>



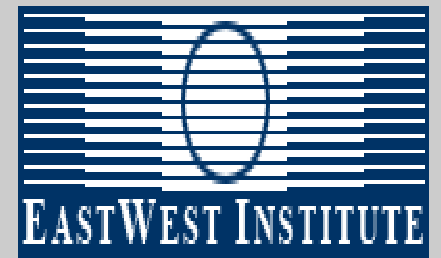
The Association of Multiethnic Cities  
of South Eastern Europe-PHILIA

<http://www.amcsee.org>



The East West Institute

<http://www.ewi.info>



STABILITY PACT  
FOR SOUTH EASTERN EUROPE



# Network of Associations of Local authorities from SEE (NALAS)



- Member Associations: Standing Conference of Towns and Municipalities (Serbia); Association of Albanian Municipalities (AKM); Romanian Federation of Local Authorities
  - NALAS structure: General Assembly meetings; Committee of liaison officers; executive bureau

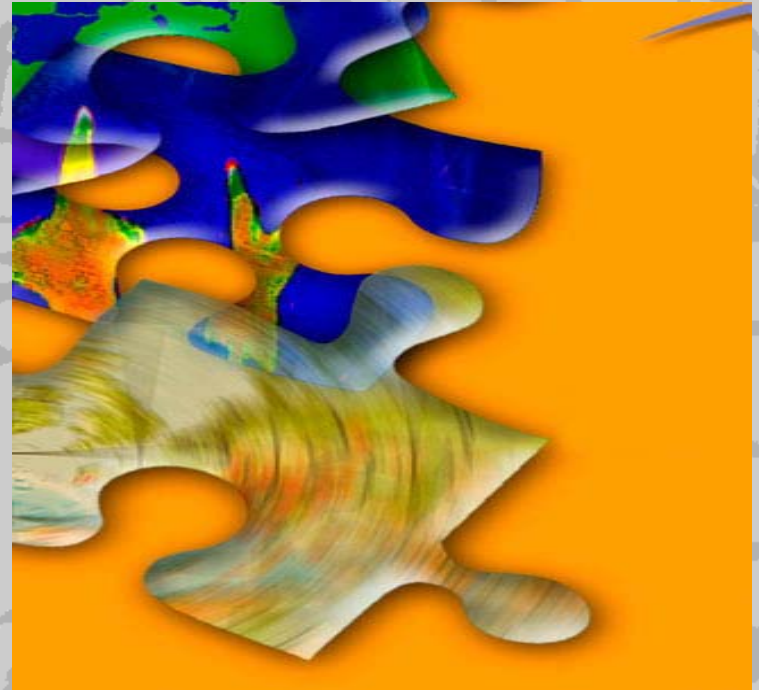


**STABILITY PACT**  
FOR SOUTH EASTERN EUROPE



# Local Democracy Agencies and Association of the Local Democracy Agencies (ALDA)

- From emergency to development, funded in 1999 as an umbrella organization
- Member of the Steering Committee on LODECBC (LODECBC Task Force)
- Stress on multilateral decentralized cooperation between Local Authorities and Civil Society
- Town Twinning: EU and the Balkans
- Council of Europe gives ALDA political support, ALDA helps CoE in project implementation



**STABILITY PACT**  
FOR SOUTH EASTERN EUROPE

# Political obstacles to Cross Border Cooperation

- Sovereignty and symbolical issues hinder CBC
- Macedonia, Albania & Greece: Ohrid-Prespa Euroregion stalemate
- Serbia (Kosovo)-Albania Political considerations dissuade CBC
- Flexibility: CBC is unrelated to sovereignty issues



**STABILITY PACT**  
FOR SOUTH EASTERN EUROPE

# Prespa/Ohrid Euroregion

- Formal setting up of this Euroregion postponed in December 2004 for “technical reasons”
- Establishment of the trilateral university cooperation between the universities of Korca, Kozani and Ohrid postponed



**STABILITY PACT**  
FOR SOUTH EASTERN EUROPE

# Regional Cooperation is one of the official conditions for EU membership

- Bridges not Walls
- Is there a region of SEE?
- EU programmes and SAP more focused on Bilateral cooperation (EU-a particular SEE state)



# Contact the SP



## STABILITY PACT FOR SOUTH EASTERN EUROPE

Rue Wiertz 50

B-1050 Brussels / Belgium

Tel: +32 (2) 401 8700

Fax: +32 (2) 401 8712

E-mail: [scsp@stabilitypact.org](mailto:scsp@stabilitypact.org)

Website: [www.stabilitypact.org](http://www.stabilitypact.org)